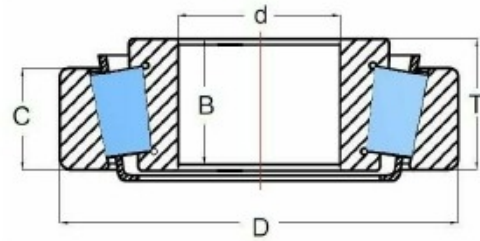


# TAPER ROLLER BEARINGS-SINGLE ROW



CHINA HOSIN



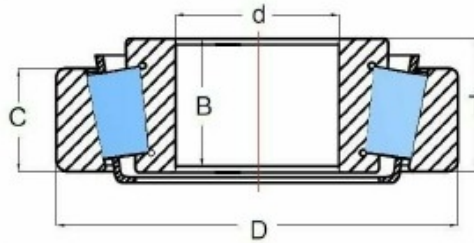
This series bearing are generally used to support combined load mainly consisting of radial load. Their cups are separable for easy assembling. During mounting and using, radial clearance and axial clearance can be adjusted and preloaded mounting can be made.

Type	d	D	B	weight(kg)	Type	d	D	B	weight(kg)
30207	35	72	18.25	0.32	32207	35	72	24.25	0.43
30208	40	80	19.75	0.42	32208	40	80	24.75	0.53
30209	45	85	20.75	0.48	32209	45	85	24.75	0.58
30210	50	90	21.75	0.54	32210	50	90	24.75	0.61
30211	55	100	22.75	0.7	32211	55	100	26.75	0.83
30212	60	110	23.75	0.88	32212	60	110	29.75	1.15
30213	65	120	24.75	1.15	32213	65	120	32.75	1.5
30214	70	125	26.25	1.25	32214	70	125	33.25	1.6
30215	75	130	27.25	1.4	32215	75	130	33.25	1.7
30216	80	140	28.25	1.6	32216	80	140	35.25	2.05
30217	85	150	30.5	2.05	32217	85	150	38.5	2.6
30218	90	160	32.5	2.55	32218	90	160	42.5	3.35
30219	95	170	34.5	3	32219	95	170	45.5	4.05
30220	100	180	37	3.65	32220	100	180	49	4.9
30221	105	190	39	4.25	32221	105	190	53	6
30222	110	200	41	5.1	32222	110	200	56	7.1
30224	120	215	43.5	6.15	32224	120	215	61.5	9.15
30226	130	230	43.75	7.6	32226	130	230	67.75	11.5
30228	140	250	45.75	8.65	32228	140	250	71.75	14.5
30302	15	42	14.25	0.1	32230	150	270	77	17.5
30303	17	47	15.25	0.13					
30304	20	52	16.25	0.17	32306	30	72	27.75	0.55
30305	25	62	18.25	0.26	32307	35	80	32.75	0.73
30306	30	72	20.75	0.39	32308	40	85	35.25	1
30307	35	80	22.75	0.52	32309	45	90	38.25	1.35
30308	40	90	25.25	0.72	32310	50	100	42.25	1.8
30309	45	100	27.25	0.97	32311	55	110	45.5	2.3
30310	50	110	29.25	1.25	32312	60	120	48.5	2.85
30311	55	120	31.5	1.55	32313	65	125	51	3.45
30312	60	130	33.5	1.95	32314	70	130	54	4.3
30313	65	140	36	2.4	32315	75	140	58	5.2
30314	70	150	38	2.9	32316	80	150	61.5	6.2
30315	75	160	40	3.45	32317	85	160	63.5	6.85
30316	80	170	42.5	4.1	32318	90	170	67.5	5.9
30317	85	180	44.5	4.85	32319	95	180	71.5	11
30318	90	190	46.5	5.65	32320	100	190	77.5	12.5
30319	95	200	49.5	6.7	32321	105	200	81.5	14.5
30320	100	215	51.5	8.05	32322	110	215	84.5	17
30321	105	225	53.5	3.15					
					32022X	110	170	38	3.05
32006X	30	55	17	0.17	32024X	120	180	38	3.24
32007X	35	62	18	0.22	32026X	130	200	45	4.95
32008X	40	68	19	0.27	32028X	140	210	45	5.25
32009X	45	75	20	0.34	32030X	150	225	48	6.35
32010X	50	80	20	0.37	32032X	160	240	51	7.75
32011X	55	90	23	0.55	32034X	170	260	57.5	10.1
32012X	60	95	23	0.59	32036X	180	280	64.5	13
32013X	65	100	23	0.63	32038X	190	290	64.5	15.28
32014X	70	110	25	0.84	32040X	200	310	70.5	18.2
32015X	75	115	25	0.9	32044X	220	340	76.5	23.3
32016X	80	125	29	1.3	32048X	240	360	76.5	23.8
32017X	85	130	29	1.35	32052X	260	400	87.7	37.8
32018X	90	140	32	1.75	32056X	280	420	87.7	39.6
32019X	95	145	32	1.8	32060X	300	460	100.7	57
32020X	100	150	32	1.9					
32021X	105	160	35	2.4					

# TAPER ROLLER BEARINGS-INCH



CHINA HOSIN

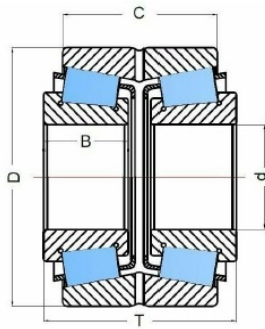


Type	d	D	B	W (kg)	Type	d	D	B	W (kg)
5BC	28.313			0.0154	28580/28521	50.8	92.075	24.608	0.697
11BC	33.297			0.0275	28548/28521	52.388	92.075	34.608	0.669
09067/091985	19.05	49.225	18.034	0.1804	28678/28622B	50.8	97.63	34.608	0.865
09081/09195	20.625	49.225	19.845	0.1555	28985/28920	60.325	101.6	25.4	0.79
TR101204/72487	50	123.825	36.512	2.101	29590/29522	66.675	107.95	25.4	0.874
LM104949/LM104911	50.8	82.55	21.59	0.42	29685/29620	73.025	112.712	25.4	0.861
LM104947A/JLM104910	50	82	21.976	0.434	LM29749/LM29710	38.1	65.088	18.034	0.238
JLM104948/JLM104910	50	82	21.5	0.422	LM300849/LM300811	41	68	17.5	0.2403
LM104949/JLM104910	50.8	82	21.976	0.418	JLM506849/10	55	90	23	0.69
LM104949E/LM104911	50.8	82.55	16.51	0.438	57414/LM300811	41	68	17.5	0.2433
JLM104948/LM104911	50	82.55	21.115	0.424	33275/33462	69.85	117.475	30.112	1.27
LM104949/LM104912	50.8	82.931	21.59	0.425	33281/33472	71.438	120	29.794	1.33
LM102949/LM102910	45.242	73.431	19.588	0.303	33889/33821	50.8	95.25	27.783	0.862
11590/11520	15.875	42.862	14.288	1.001	3579/3525	42.862	87.312	30.162	0.805
LM11749/LM11710	17.462	39.878	13.843	0.083	368A/362A	50.8	88.9	20.638	0.153
LM11949/LM11910	19.05	45.237	15.494	0.124	368/362	50.8	90	20	0.562
M12649/M12610	21.43	50.005	17.526	0.174	3776/20	44.983	93.264	30.162	0.73
LM12748/LM12710	21.43	45.237	15.494	0.118	3780/3720	50.8	93.264	30.162	0.856
LM12749/LM12710	22	45.237	15.494	0.116	3782/3720	44.45	93.264	30.162	0.735
LM12749/LM12711	22	46	15.494	0.121	3782/3720	34.925	85.725	30.162	0.88
13686/13620	38.1	69.012	19.05	0.296	3872/3820	57.15	96.838	21	0.593
14125A/14276	31.75	69.012	19.845	0.349	387AS/382A	57.15	96.838	25.4	0.669
14137A/14276	34.925	69.012	19.845	0.325	387A/382S	57.15	98.425	21	0.46
14138A/14276	34.925	69.012	19.845	0.322	387A/382S	57.15	96.838	21	0.598
14138/14274	34.925	69.012	19.845	0.32	387A/382A	39.688	73.025		0.357
15101/15245	25.4	62	19.05	0.2821	U399/U360L	63.5	112.713	19.395	1.22
15123/15245	31.75	62	19.05	0.2331	3982/3920	66.675	12.713	30.162	1.14
15123/15243	31.75	61.912	19.05	0.2301	390A/394A	63.5	110	22	0.851
15103S/15245	26.162	62	19.05	0.2791	42688/42620	76.2	127	30.162	0.4
15126/15245	31.75	62	19.05	0.255					
15113/15245	28.575	62	19.05	0.28	462/453X	57.15	104.775	30.162	1.08
16137/16282	34.925	72	19	0.36	L44643/L44610	25.4	50.292	14.224	0.129
16150/16282	38.1	72	19	0.332	L44643L/L44610	25.4	50.292	14.224	0.129
1755/1729	22.225	56.896	19.368	0.254	L44649/L44610	26.988	50.292	14.224	0.124
17887/17831	45.23	79.985	19.842	0.41	L45449/L45410	29	50.292	14.224	0.113
18590/18520	41.275	73.025	16.667	0.285	LM48548/LM48510	34.92	65.088	18.034	0.2584
18790/18720	50.8	85	17.462	0.42	LM501349/LM501310	41.275	73.431	19.558	0.333
HM212047/HM212011	63.5	122.238	38.1	1.84	LM501349/LM501314	41.275	73.431	21.43	0.353
HM212049/HM212011	66.675	122.238	38.1	1.85	HM518445/HM518410	88.9	152.4	39.688	2.875
HM218248/HM218210	89.974	146.975	40	2.52	575/572	76.2	139.992	36.512	2.442
14780/24720	41.275	76.2	22.225	0.424	593/592A	88.9	152.4	39.688	2.78
25570/25520	36.513	82.931	23.813	0.651	LM603049/LM603011	45.242	77.788	19.842	0.258
25572/25520	38.1	82.931	23.813	0.642	LM603049/LM603012	45.242	77.788	21.43	0.377
25577/25520	42.875	82.931	23.813	0.69	A6075/A9175	19.05	39.992	12.014	0.066
25577/25522	42.875	83.058	23.876	0.7	L610549/L610510	63.5	94.458	19.05	0.449
25580/25520	44.45	82.931	23.812	0.561	LM67048/LM67010	31.75	59.13	15.875	0.179
25581/25520	44.45	82.931	23.812	0.563	LM67049A/LM67010	31.75	59.13	15.875	0.184
25590/25520	45.618	82.931	23.812	0.54	67989/67920	209.55	282.5757	46.038	7.73
25590/25521	45.618	83.058	23.812	0.534	L68149/L68110	34.981	59.131	15.875	0.1702
25590/25522	45.618	83.058	23.876	0.538	L68149/L68111	34.981	59.974	15.875	0.177
25590/25523	45.618	82.931	26.988	0.584	JL69349/JL69310	38	63	17	0.196
25877/25820	34.925	73.025	23.812	0.474	JM716649/JM716610	85	130	30	1.704
25877/25821	34.925	73.025	23.812	0.468	78215C/78551	53.975	140.03	36.512	2.7122
25880/25821	36.487	73.025	23.812	0.451	M802048/M802011	41.275	82.55	26.543	0.615
27687/27620	82.55	125.412	25.4	1.5	HM803146/HM803110	41.275	88.9	30.162	0.886
2785/2720	33.338	76.2	23.812	0.544	HM803149/HM803110	44.45	88.9	30.162	0.836
2788/2729	38.1	76.2	23.812	0.496	JL819340/JL8199310	95	125	20	0.8382
2788/2720	38.1	76.2	23.812	0.49	M86649/M86610	30.162	64.292	21.433	0.337
2790/2720	33.338	76.2	23.812	0.549	M88048/M88010	33.338	68.262	22.225	0.3829
2790/2729	33.338	76.2	23.812	0.555	HM88649/HM88610	34.925	72.333	25.4	0.479

# TAPER ROLLER BEARINGS-TWO ROW



CHINA HOSIN



This series bearing are with two row rollers could take great combined load of radial & axial.

d	D	T	C	B	Designations	Weight(kg)
50	90	49	39	20	97210	1.24
	90	55	43.5	23	352210	1.39
55	90	54	21	54	3187111	1.73
70	125	74	61.5	31	97514E	3.66
75	130	74.5	62	31	97515E	3.81
80	140	56.75	22	52	187216	3.28
	140	80	65	33	97516	4.97
85	150	84	66	36	97517EK	5.59
90	160	94	78	40	352218X2	7.8
100	180	83	67	34	97820	6.51
	180	111	92	46	97520EK	11.6
	190	125	100	62.5	37720	14.9
105	190	117	96	50	97521EK	13.7
110	180	95	76	42	352122	9.1
	200	124	102	53	97522EK	16.5
	200	110	90	48	352124	12.6
120	215	87	34	80	187224E	13.4
	215	132	106	58	57524	19.6
	215	132	106	58	67524	19.1
	215	132	109	58	97524K	19.2
	180	70	56	30	2097926	4.87
130	200	95	75	42	2097126	9.72
	210	64	57	29	1-7006	8.06
	210	110	90	48	352126	13.9
	214	115.6	98	48	97826U	15.7
	230	149	120	64	97526EK	27.4
	230	149	120	66.5	97526/EY	25.6
140	235	145	115	72.5	37726	24.7
	210	95	75	42	2097128	8.36
	225	115	90	50	2097728	15.5
	250	157	128	68	97528EK	31.7
	300	154	47	70	187328	50.3
150	210	76	30	38	32930/DF	7.99
	210	80	62	36	2057930	9.12
	210	80	62	36	2097930	9.32
	225	112	88	45	97830	14.1
	250	138	112	60	2097730	25.8
	270	109	87	45	97730	24.5
	270	169	138	73	97530EK	39.4
	220	82	65	36	2097932	8.15
	240	115	90	48	2097132	16.5
160	270	140	120	65	352132X2/HA	31.8
	270	140	120	65	352132X2/HAC9	31.8
	270	140	110	70	37732	26.7
	270	150	120	70	2097732	28.3
	270	150	120	70	2097732Y	28.3
	290	180	140	80	97532	46.2

# TAPER ROLLER BEARINGS-TWO ROW



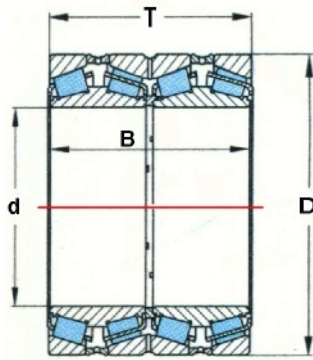
CHINA HOSIN

d	D	T	C	B	Designations	Weight(kg)
165	290	150	125	70	97833U	41.1
170	230	82	65	36	2097934	8.11
	230	65	27	65	87834	6.79
	260	120	95	54	2097134	20.4
	260	120	95	54	20571345	20
	280	150	120	66	2097734	35.6
180	250	95	74	42	352936X2	13
	280	134	108	60	2097136	28.5
	285	108	79.4	54	37736	23.2
	300	164	134	72	2097736	39.9
	320	192	152	86	97536K	60
	320	190	145	86	97536	52.4
	340	180	140	83	97736	71.9
190	260	95	75	42	352938X2	13.3
	260	95	75	42	32538X2/DB	14.4
	290	134	104	60	2097138	28.2
	320	170	130	76	2097738	52
200	280	110	85	48	2097940	18.1
	310	151	118	66	352040X2-1	38.9
	310	151	120	66	352040X2	38.3
	340	184	150	82	2097740	63.8
	360	218	98	174	97540E	93.3
205	320	150	110	75	37741	40.2
220	300	110	88	48	2097944	21.2
	340	165	130	72	2097144	47.7
	370	195	150	88	2097744	76.3
225	360	146.5	111	73.25	37745	48.2
230	355	145	110	72.5	37746	
240	320	105	82	48	2097948	22.3
	320	110	87	48	2097948K	23
	320	110	87	48	2097948K1	23.2
	360	165	130	72	2097148	52.8
	400	210	163	95	2097748	98.1
260	360	134	108	60	2097952K	39.7
	360	134	108	60	2097952	39.9
	400	150	110	75	37852	60.3
	400	186	146	82	2097152	79.3
	430	180	130	90	37752	87.9
	440	225	180	100	2097752	124
280	380	134	108	60	2097956	44
	420	186	146	82	2097156	81.5
300	420	160	128	72	352960X2/P6	60.8
	460	210	165	95	2097160	118
	500	200	165	90	97860	142
	500	205	152	90	1097760	141
	560	170	50	170	370660/HC	197
305.07	500	200	70	200	87961K	122
305.2	500	200	70		87961K1	115

# TAPER ROLLER BEARINGS-FOUR ROW



CHINA HOSIN



This series bearing with four row rollers could take swingeing radial loads as well as take two way axial loads. It is very low to the rotate speed. It's mainly used in cold & hot rolling mills widely. It's adopted to transition fit between the bearing inner ring & rolling. Normally, the material is 20Cr2Ni4A or GCr15.

It's influenced highly to the bearing's use for the axial clearance. If the clearance were small, temperature increase would be high; and, contrariwise, the bearings would be easy to destroy. So, it should be attention to the erection sequence of the three outer rings, two inner rings, two outer ring spacers, one inner ring spacer.

d	D	B	T	Designations	Weight(kg)
139.7	200.025	157.162	160.338	77928	16.2
150	210	165	165	2077930	21.2
	225	136	136	77730	17.7
170	260	230	230	2077134	43
180	280	180	180	77736	39.6
200	310	200	200	77740	55.6
	310	275	275	2077140	75.1
205	320	205	205	77741	55.4
220	340	305	305	2077144	99.5
240	360	310	310	2077148	90.5
250	460	270	270	77750K	192
260	360	265	265	382952/HC	77.8
	400	255	255	77752	117
	400	255	255	77752G	117
	400	345	345	382052	161
	440	300	300	777752	182
	440	330	330	477752	195
280	420	250	250	77756	119
300	420	310	310	77860U	134
	460	390	390	2077160	222
	500	350	350	77760U	280
320	480	380	380	2077164	252
340	460	310	310	2077968	147
	520	325	325	381068	247
360	480	375	375	77872	197
	600	420	420	1077772	388
380	550	330	350	77776	273
	620	388	388	3077776	443
	620	420	420	381176/HC	485
	620	420	420	381176/HCC9	485

